

Coverage Prediction Comparison Service

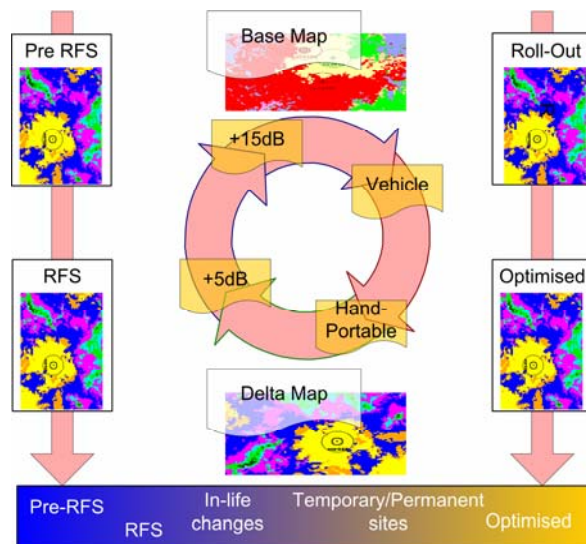
Airwave's System Optimisation Programme uses coverage predictions as the first step to demonstrate the impact of removing a site. These show the coverage with the site ("before" prediction) and the coverage without the site ("after" prediction).

Due to the limited timescales allowed by the System Optimisation Programme and the time and cost of surveying, the coverage predictions provided by Airwave are a vital first step to identifying those areas where your operational coverage is most at risk. It is also equally important to identify those areas where the proposed site removal has little or no impact on operational coverage.

It is therefore important to have a quick and easy method of comparing Airwave's before and after predictions so that you can see the changes. You can also compare these with the predictions made at RFS to see if the predictions themselves have changed.

The **Syntech Coverage Prediction Comparison Service** has been developed for precisely this purpose and has been tried and tested in comparing temp-perm predictions. Using the Airwave RFS, before and after predictions, Syntech produce a series of maps, highlighting all the changes between the predictions. The output can be viewed as free-standing map files or imported into MapInfo™. The maps are sent back on CD-ROM, or we can visit you to present and explain the results as part of our wider **System Optimisation Programme Service**.

As an enhancement to the service, you can provide us with your coverage requirements (hand portable, +5 dB and +15 dB Enhancements) as MapInfo™ files. We then calculate the predicted percentage coverage and change in coverage for each class.



Benefits

- ♦ Quickly identify the differences between predictions – no more spending hours poring over A0 coverage plots!
- ♦ Gain confidence that the predicted coverage meets and continues to meet your requirements
- ♦ Identify any areas where coverage is predicted to fail to meet contracted levels
- ♦ Track and identify changes precisely to a level of accuracy not possible by human eye (possible to identify a single change in 15 million!)
- ♦ Ensure the System Optimisation Programme does not lead to a lowering of coverage levels
- ♦ Monitor the evolution of coverage over the 15-year life-time of the contract

Coverage Prediction Comparison Service

The Service

Syntech's **Coverage Prediction Comparison Service** uses a powerful computer algorithm to compare two sets of coverage predictions. The output is a series of detailed maps identifying the differences between the predictions.

Base Map

The Base Map shows in a single map all the areas where predicted coverage has changed. Areas where the coverage has decreased from one class to another (eg +15 dB to +5 dB) are coloured red, while areas where the coverage has increased are coloured green.

The Base Map allows you to quickly identify those areas where coverage has changed – the Delta Maps then show these areas in more detail.

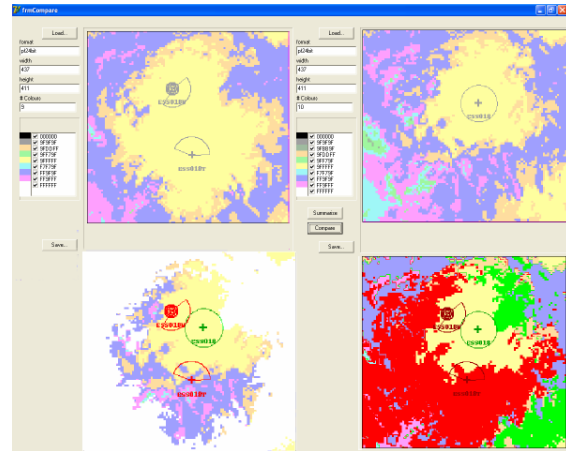
Delta Maps

Delta Maps show the changes to the predicted coverage for each of the following:

- ♦ +15 dB (E2) Enhancement
- ♦ +5 dB (E1) Enhancement
- ♦ Hand portable
- ♦ Vehicle (Major/Minor Roads)

Each Delta Map shows the predicted coverage for the class, together with any changes. For example, the +15 dB Enhancement Delta Map shows the original areas where +15 dB Enhanced coverage was predicted, together with the current prediction for those areas – ie you can see where coverage has been reduced.

Similarly, the Hand Portable Delta Map shows the original areas where Hand portable coverage was predicted, together with current predictions – ie where coverage has increased (to +5 dB or +15 dB) or reduced (to Vehicle).



Features

- ♦ 100% accurate computer-based comparison of two coverage predictions (1:15,000,000)
- ♦ Works with Airwave five- and seven-colour predictions
- ♦ Shows predicted coverage for each coverage class and change in coverage for each class
- ♦ Best Server predictions also supported

Output

- ♦ Base Map showing all changes in coverage in a single map file to 100 x 100m predicted resolution
- ♦ Delta Maps showing detailed changes for each of your coverage classes
- ♦ Maps supplied as .TIFF, .JPEG or .BMP files or MapInfo™ tables
- ♦ Supports display of your contracted coverage requirements in MapInfo™
- ♦ Optional overlay of maps on OS 1:50,000 maps in MapInfo™